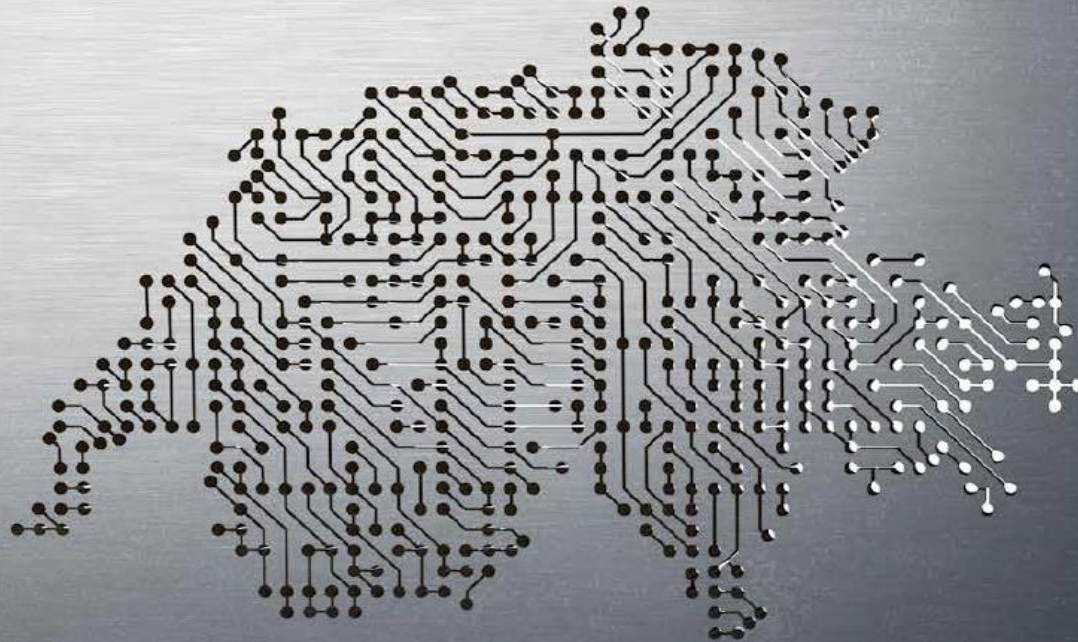




# UNIQUA HMI

AgieCharmilles



## +100 Years of EDM experience made in Switzerland

**1943**

Russian scientists Dr. Boris and Dr. Natalya Lazarenko discover the controlled erosion of tungsten electrodes submerged in dielectric fluid.

**1952**

Launch of the CHARMILLES EDM division at Ateliers des Charmilles in Geneva.

**1954\***

First industrial EDM machine tool, the CHARMILLES Eleroda D1; AGIE created in Basel.

**1969\***

First industrial numerical-controlled wire-cut EDM machine tool, the AGIECUT DEM-15.

**1973\*\***

Creation of conical cut and coaxial flushing for wire EDM machines.

**1978\*\***

First patent for coated EDM wire.

**1985\*\***

Thermal cut and preparation of EDM wire (ThermoCut).

**1996\*\***

Creation of Surface Integrity (SI) generator.

**1998\*\***

Creation of automatic wire change (twin wires).

**2003\*\***

500 mm<sup>2</sup>/min cutting rate for wire-cut EDM machines.

**2011\*\***

Integrated vision unit (IVU) with in-process optical measurement for high-precision wire EDM.

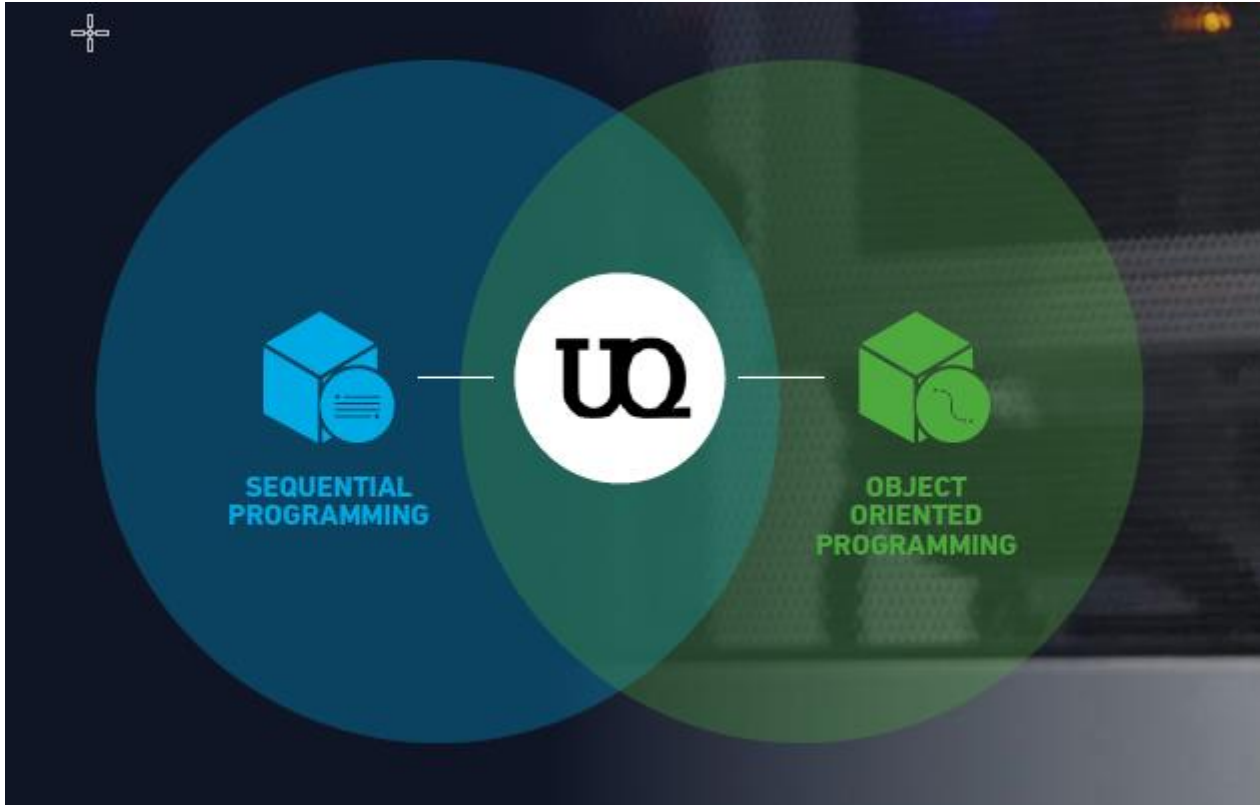
**2021**

Cut P Pro Series with Uniqua

\* World premiere

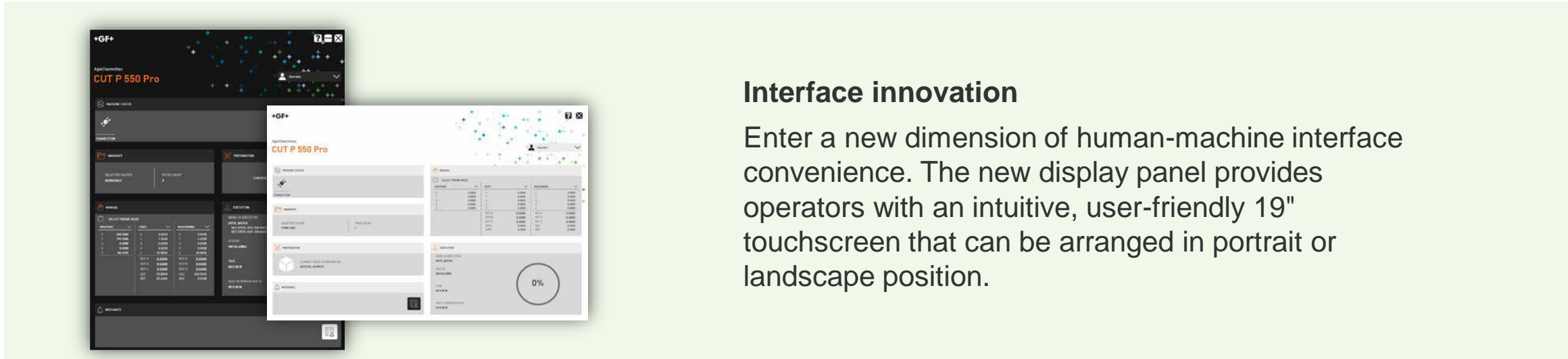
\*\* Global innovation

# UNIQUA: the new HMI



**UNIQUA** is the new GF Machining Solutions uman/machine interface (HMI) for wire EDM Machines. It represents the pinnacle of more than a century of EDM technology – and the perfect combination of optimal functionality and usability (ergonomics) from our previous HMIs.

# UNIQUA: Easy to use



## Interface innovation

Enter a new dimension of human-machine interface convenience. The new display panel provides operators with an intuitive, user-friendly 19" touchscreen that can be arranged in portrait or landscape position.

## Dashboard power

Customizable dashboard widgets and easy-to-use menu system seamlessly guides you through the workflow process.

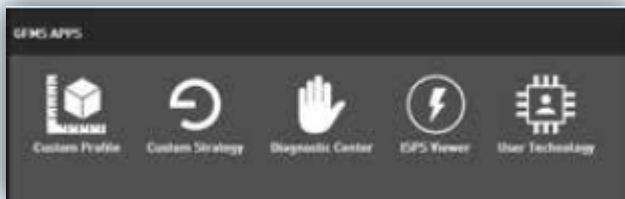


# UNIQUA: Easy to use



## Intuitive interactivity

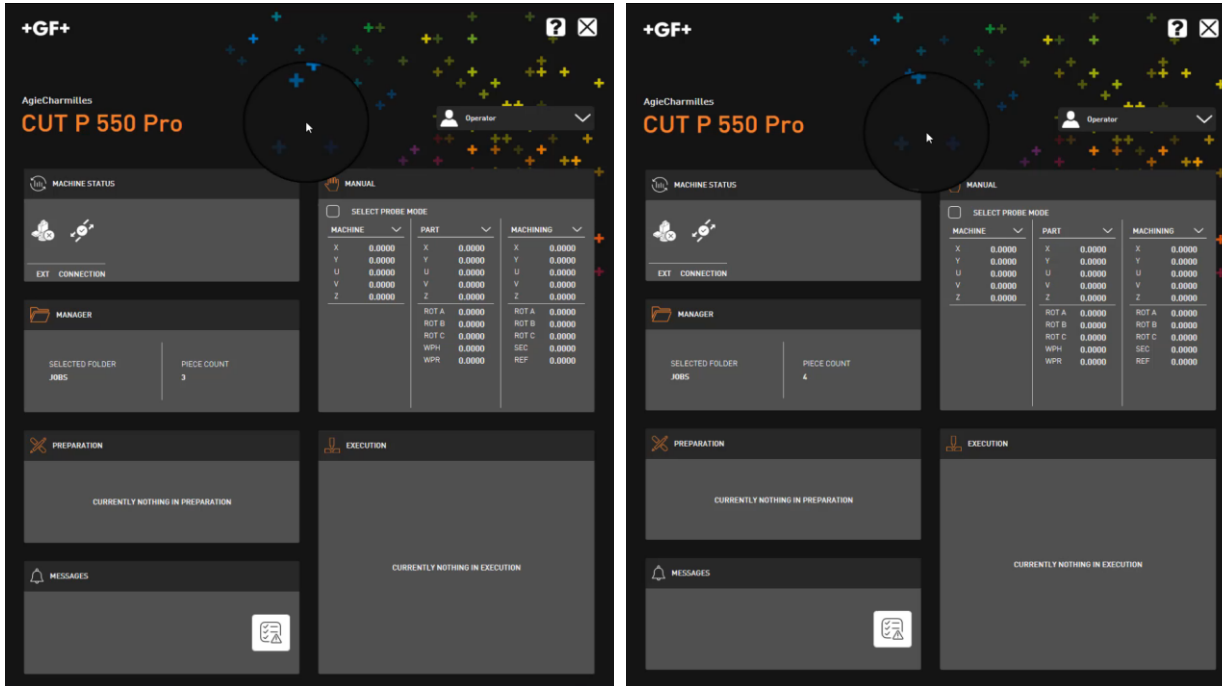
Shorten the learning curve and make any job easy with powerful graphic previews and an interactive help menu.



## Work Space

UNIQUA tools are displayed as icons to allow for all users to easily identify key functions. GFMS applications such as Custom Profile, Custom Strategy, ISPS Viewer and User Technology, and many more, are available in two sections: Tool Box and External APPS.

# UNIQUA: where flexibility meets productivity



- **Decide your working strategy at any time**

UNIQUA's unique functionalities gives you the power to decide some of the cutting strategies at any time during the phases of preparation or execution. Functions like early/late, led in/out CW/CCW direction or slug attach length can be changed with no efforts.

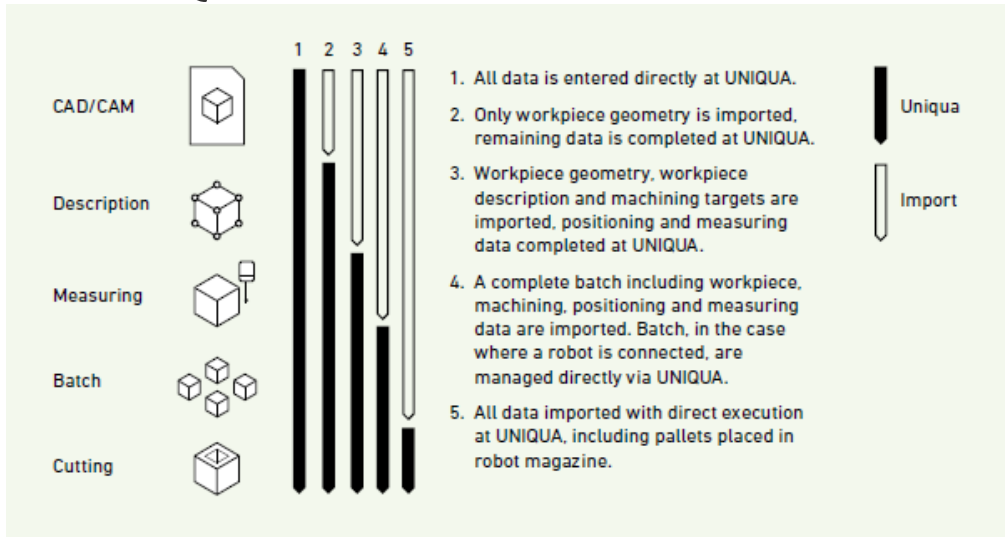
- **Dynamic adaptation of batch execution**

UNIQUA gives full power to operator, allowing changes in the priorities of workpiece and batches execution. Functions like piece insert, priority change.

- **Optimized automation management**

UNIQUA supports the management of workpieces, batches of workpieces and complete pallets. So the integration of zero-point tooling and pallets loading/unloading robots will not change the way you manage your jobs.

# UNIQUA: where flexibility meets productivity

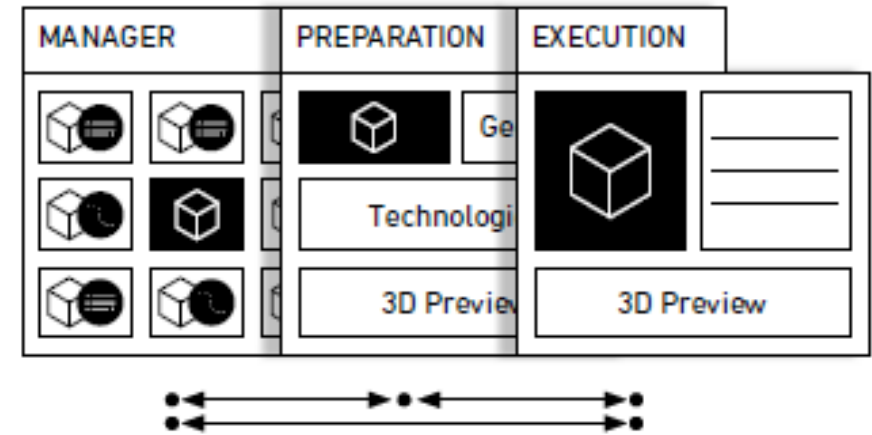


## Workflow preparation

**MANAGER:** Manage folders, files and jobs to streamline preparation and execution.

**PREPARATION:** Import or create geometries, and define machining conditions, technology and sequences. 3D renderings of every job can be previewed and sent directly to execution or back to Management.

**EXECUTION:** The execution cockpit allows operators to configure and monitor the job with access to variables and points. The current job's operation can also be monitored graphically throughout the entire execution process.



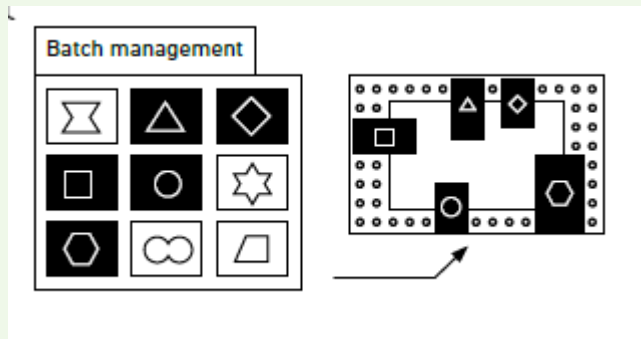
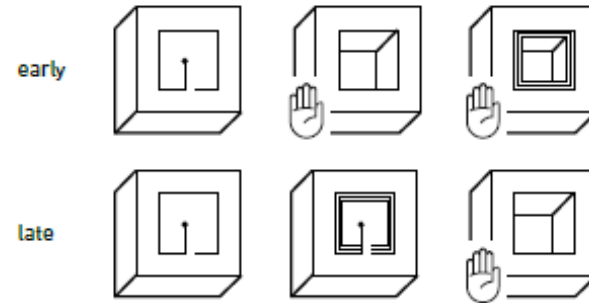
# UNIQUA: where flexibility meets productivity

## Change your working strategy at any time

UNIQUA's exclusive functionality offers you the flexibility to adjust cutting strategies anytime during preparation or execution.

## Customized Strategy / Priorities

Customized machining sequences minimize unnecessary operator interventions and allow for planned downtime. Priorities can be changed during execution with "one click" directly at UNIQUA without interrupting machining.

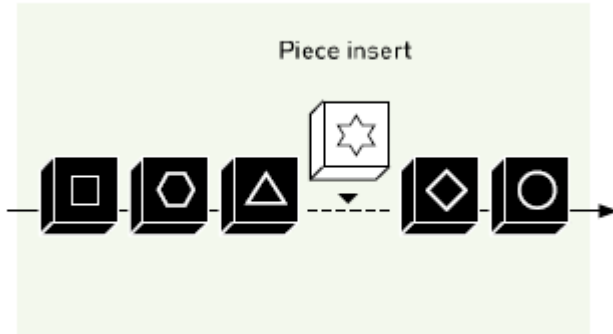


## Optimized automation management

UNIQUA effectively manages workpieces by the piece, by the batch or on complete pallets. UNIQUA continuously monitors measuring and cutting processes to produce multiple pallets, which can be stored in the robot magazine. A full sequence of production in different pallets can be programmed directly from your CAD/CAM, avoiding the need of re-managing at the machine HMI.



# UNIQUA: where flexibility meets productivity



## Dynamic adaptation of batch execution

UNIQUA gives the operator full power to change workpiece and batch-execution priorities, including functions such as piece insert and priority change.

## Piece Insert

No loss of data or need of reprogramming when interrupting and inserting a job with Piece insert. The interrupted job is resumed exactly where it was stopped, without the need to modify existing data.

An aerial photograph of a vast mountain range with numerous peaks covered in snow. The mountains are rendered in various shades of blue, from deep navy to light sky blue, creating a sense of depth and scale. A semi-transparent white rectangular box is positioned horizontally across the middle of the image, containing the text "Thank you".

**Thank you**



# Disclaimer

This document is for presentation purposes only and should not be construed as an offer, invitation or solicitation to subscribe for, purchase or sell any investment. Neither it nor anything it contains shall form the basis of any contract whatsoever.

Opinions expressed herein reflect the current judgement of the management of GF. The presentation contains forward-looking statements that involve risks and uncertainties. The actual results of GF may differ materially from those anticipated in these forward-looking statements and forecasts as a result of a number of factors.

The management of GF does not accept any liability whatsoever with respect to the use of this presentation.